



Kennedy Peak Trail

DIRECTIONS

Half Day Hike: From Camp Roosevelt, drive east on SR 675 to ridge top (1.6 miles east). There is room for several cars to park on either side of the road.

Day Hike: From SR 675, Just past Camp Roosevelt to the east, the trail begins as a fire road with a gate across it.



Parking



Open Dates
Open Year Round

NEARBY FACILITIES

Camp Roosevelt Recreation Area, site of the first Civilian Conservation Corp Camp in the Nation is 1.5 miles from the trail on SR 675.

Lions Tale National Recreation Trail. This .5 mile trail encourage you to explore the forest using senses other than sight. Universally Accessible.

For More Information



Lee Ranger District
95 Railroad Ave.
Edinburg, VA
22824
(540) 984-4101

This popular day hike provides wonderful views from an observation tower.

Half Day Hike - 5.2 miles Round Trip - NOT a circuit hike
Difficulty - 515 ft ascent, steep in places

Miles

0.0 Begin at Edith Gap. Locate Massanutten Trail - 408 (orange blazes) on north side of road.

2.0 Trail skirts west of Kennedy Peak.

2.4 Look for Kennedy Peak Trail - 408A (white blazes) on your right and follow it .25 miles with a 220 ft. rise to the summit.

2.7 Kennedy Peak. The stone base is the remains of an old fire lookout tower.

Return using the same route.

Day Hike - 9.2 miles Round Trip- Circuit Hike
Difficulty - 1320 ft. ascent, steep

Miles

0.0 Stephen Trail - 458 (yellow blazes) begins at the entrance to the parking area just east of Camp Roosevelt Recreation Area. Follow yellow "i" blazes out of the north end of the parking area.

4.7 Turn right on the Massanutten Trail - 408 (orange blazes, T-junction).

5.5 Look for Kennedy Peak Trail - 408A (white blazes) on your left and follow it .25 miles with a 220 ft. rise to the summit.

5.7 Kennedy Peak. The stone base is the remains of an old fire lookout tower. Begin return by descending Kennedy Peak Trail.

6.0 Turn LEFT on orange blazed trail.

8.4 Edith Gap SR 675. Parking on both sides of the road. Turn right along road for 35 yards and reenter the forest on Massanutten Trail - 408 (orange blazes). Follow this trail back to Camp Roosevelt.

9.2 T-junction near storage shed with yellow blazed trail Stephens Trail - 458 on right. Turn right into parking area.

Maps:

Trails Illustrated Map 792, PATC Map G

Trail Use Allowed:

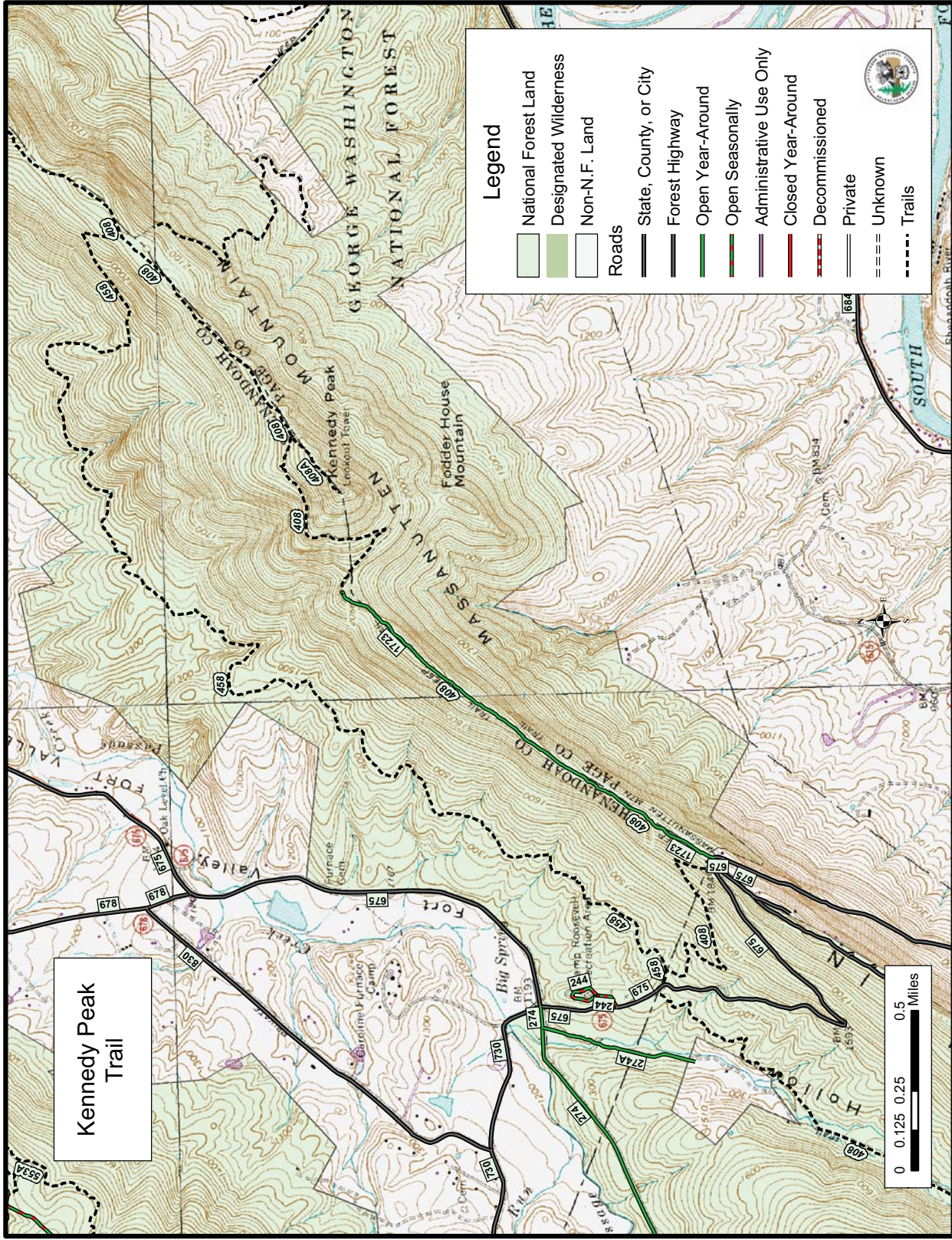
Hiking, horseback riding, mountain biking

Connections:

Massanutten National Recreation Trail, Stephens Trail



United States Department of Agriculture
Forest Service
Southern Region



The U.S. Department of Agriculture (USDA) prohibits discrimination in all its programs and activities on the basis of race, color, national origin, age, disability, and where applicable, sex, marital status, familial status, parental status, religion, sexual orientation, genetic information, political beliefs, reprisal, or because all or a part of an individual's income is derived from any public assistance program. (Not all prohibited bases apply to all programs.) Persons with disabilities who require alternative means for communication of program information (Braille, large print, audiotape, etc.) should contact USDA's TARGET Center at (202) 720-2600 (voice and TDD). To file a complaint of discrimination write to USDA, Director, Office of Civil Rights, 1400 Independence Avenue, S.W., Washington, D.C. 20250-9410 or call (800) 795-3272 (voice) or (202) 720-6382 (TDD). USDA is an equal opportunity provider and employer.